



+

•

○

Altered states

By Shelly, Ari, Amber, Abby, and Ziheng

Renaissance paintings

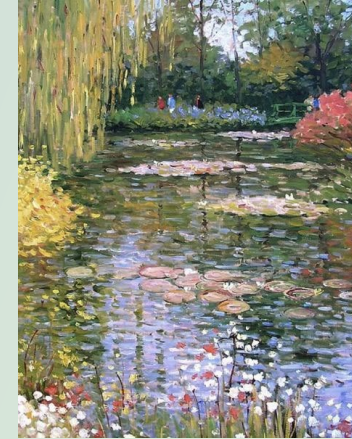
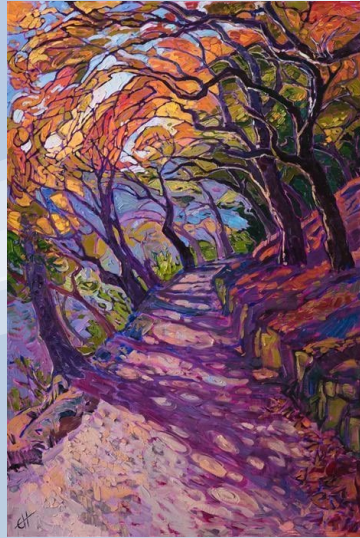
Salvador Dali

Fantasy/fairytale

Laura Williams
(photography)

Negative space art

Moodboard/inspirations



We are basing our film off the artwork 'draped seated woman' by Henry Moore (1957-1958). This is a statue of a woman that we saw in the Tate Britain.

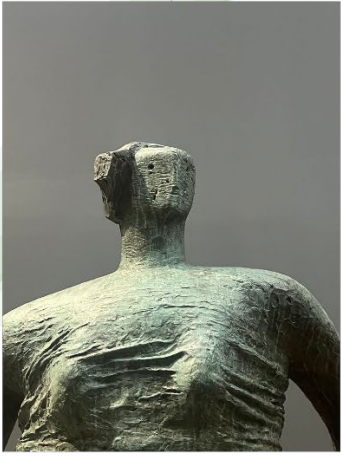
Our film will have a person walk around an art gallery, with a statue following her. Eventually she notices something wrong and turns around, but the statue is back into position.



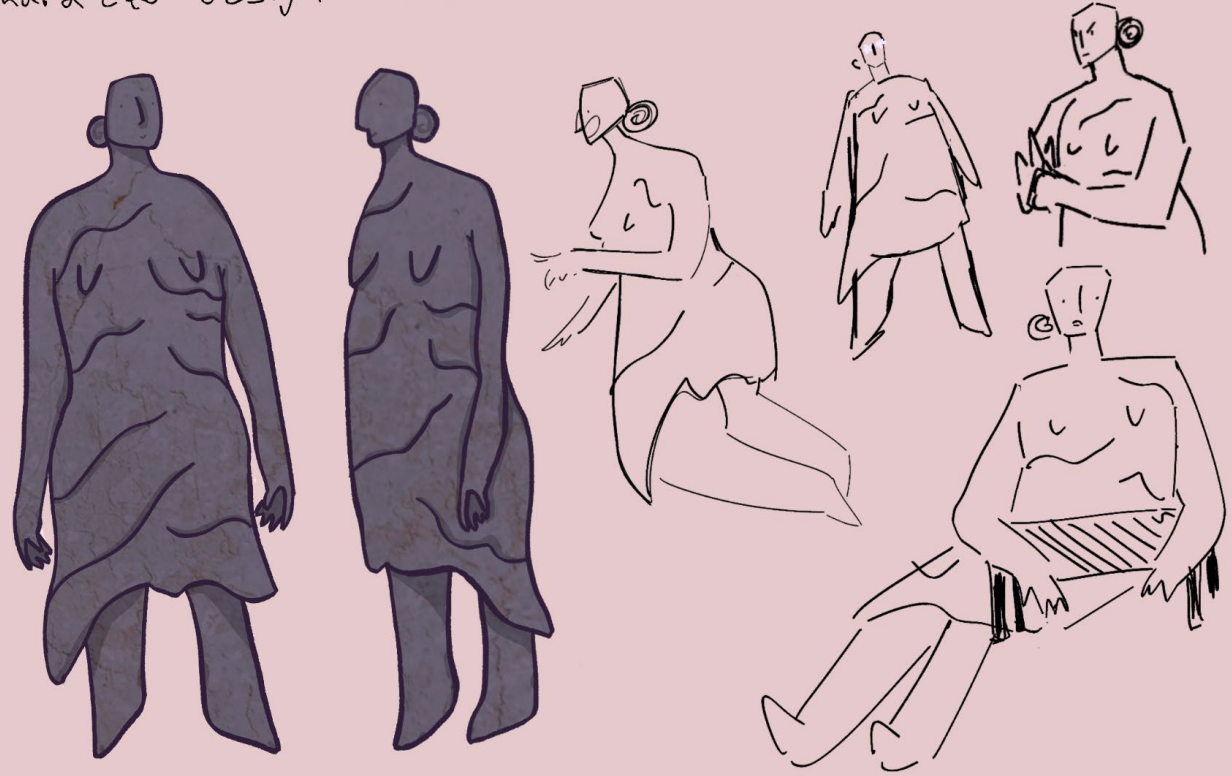
Storyboard



We will be using maya, procreate, premiere pro, and nuke in this project.



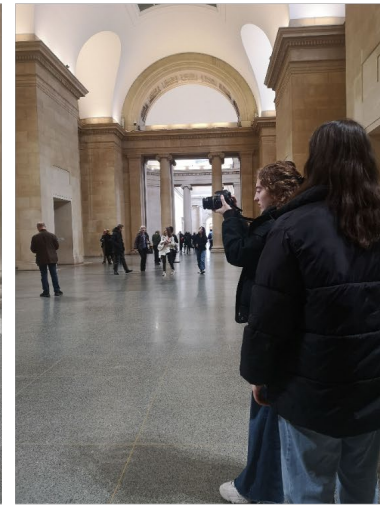
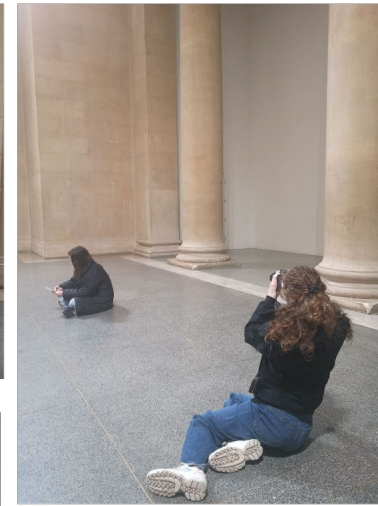
Character design: Rock Mother



References

The art – this is a character design of the statue we will be 3d modelling to use in our film

filming



The kit we used



miro



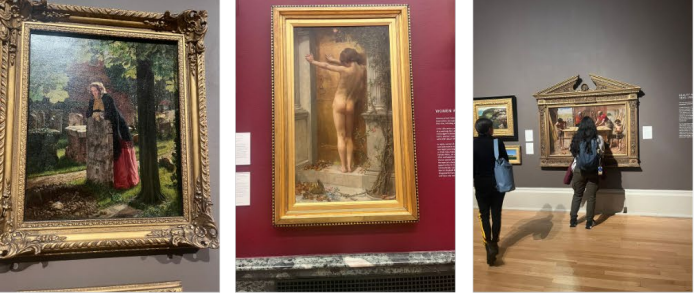
1



Canon DSLR Shooting Kit

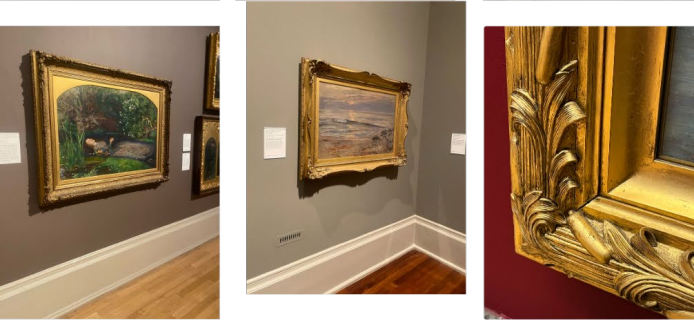
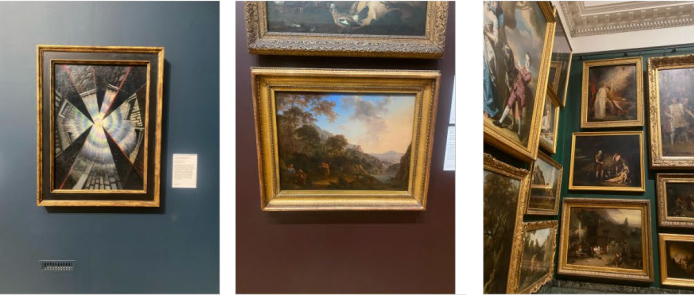
"1 x Canon DSLR Camera 1 x 18-55mm f3.5/5.6 EFS lens 1 x Hot Shoe Shotgun Microphone 1 x Microphone Foam Windshield 1 x 3.5 Mini Jack Microphone Cable 1 x Camera Strap 1 x Battery 1 x Camera Charger 1 x Camera Charger Mains Cable 1 x USB Cable 1 x Kit Bag" [less](#)

miro



3D modelling

We are using these picture frames and paintings as references for 3d modelling picture frames in the background



schedule

We split the different tasks to each person in our group

